



Reliable Products for a World of Industries

Product Catalog

Guzzler® Pumps
Sea-Lect® Valves
Accessories

www.thebosworthco.com



The Bosworth Company is the premier U.S. manufacturer of diaphragm hand pumps, foot pumps and motorized pumps. The Bosworth Company employs a Quality Management System that is ISO 9001:2008 certified for the design and manufacturing of pumps and valves. A number of the Company's pump products also meet the CE standard for acceptance in the European market.

For over thirty years, Bosworth's Guzzler® line of diaphragm pumps have set the standard for quality and reliability. Bosworth Guzzler pumps are used as bilge pumps, dewatering pumps, sanitation pumps, grout pumps, glue pumps, priming pumps as well as in a host of other specialty applications.

Bosworth also manufactures the Sea-Lect® diverter ("Y") valve. Sea-Lect Y-valves are used extensively throughout the marine industry and are the first Y-valve to feature an optional true 3-way flow path.

Bosworth's top-of-the-line products serve industry needs in a wide range of markets, including marine, sanitation, industrial, OEM and water filtration. Bosworth products feature an extensive set of product options, creating literally millions of different product configurations to meet the requirements of diverse applications.

In addition to its standard product line, Bosworth also provides custom products to satisfy the needs of unique applications. Contact us to discuss how we can adapt our products to meet your requirements.

TABLE OF CONTENTS

Topic	Page
Guzzler Pumps	1
Guzzler Pump Families	2
Customizing Your Guzzler	7
Sea-Lect Y-Valves	8
Sea-Lect Check Valves	9
Accessories	10
Applications	11

Guzzler Diaphragm Pumps

If you haven't got a Guzzler, you still need a pump!



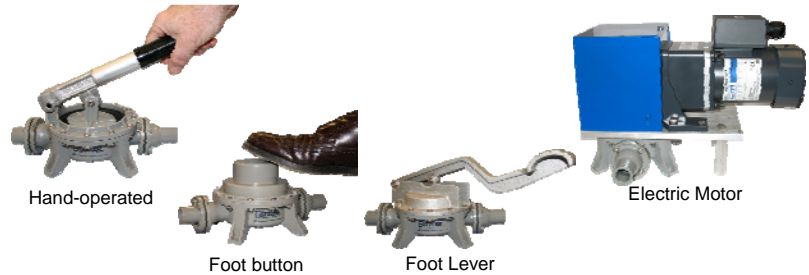
FEATURES

- Diaphragm pumping action
 - Maximum suction lift: 12 - 22* feet
 - Maximum pump head: 30 feet
 - Self-priming
 - Over 20 different families of pumps
 - Wide range of component choices
 - Replacement parts available for all components
- * with check valve

BENEFITS

- Reliable performance in demanding applications
- Versatility—suitable for wide range of fluid transfer and pump priming needs
- Ease of installation
- Customizable to suit your application requirements

Activation Options



Optional 19 inch Tethered Handle



Extra long aluminum handle for ease of pumping. Handle is tethered by wire cable to prevent loss. Requires Guided-Stroke clamp ring.

Clamp Rings

Allows handle to be positioned in any of 12 different orientations for ease of installation.

Optional clamp ring available in epoxy-coated aluminum or with "stop-brackets" to help prevent pump over-stroking.

"Guided-stroke" clamp ring prolongs diaphragm life. Required for 19 inch handle option.



Valves

- Flapper** — General purpose liquid transfer.
- Duckbill** — For dirty liquid and sewage. Permits mounting in any position.
- Umbrella** — Most efficient for pumping clean liquid. Also used for air and vacuum service.

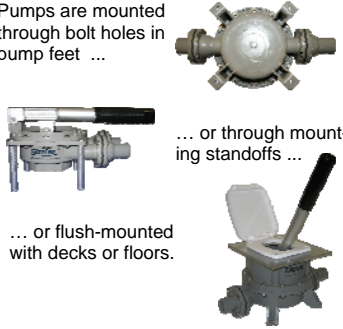


Mounting Options

Pumps are mounted through bolt holes in pump feet ...

... or through mounting standoffs ...

... or flush-mounted with decks or floors.



Diaphragms

Pump diaphragms are available in a range of materials, including Buna-N, Viton, Neoprene, EPDM and silicone.



Inlet/Outlet Flanges

Inlet / Outlet flanges available in wide range of sizes (from 1/4" to 2") and end styles (smooth, tapped, threaded, barbed, etc.)



Body Styles & Materials

Pump bodies are available in different styles as well as materials, including Delrin, polypropylene, aluminum and bronze.



Guzzler Diaphragm Pump Families

For detailed specifications and customization options for each pump family, go to ...

www.thebosworthco.com

HAND PUMPS - STANDARD MOUNT



	GH-0400D	GH-0400P	GH-0400N	GH-3400A	GH-0450D
MATERIAL*	Delrin	Polypropylene + Aluminum	Natural Delrin (Pigment-free)	Aluminum	Delrin
CAPACITY** (gpm / lpm)	10 / 37.9	10 / 37.9	10 / 37.9	10 / 37.9	10 / 37.9
PRESSURE (psi / kg-cm ²)	15 / 1.0	15 / 1.0	15 / 1.0	15 / 1.0	15 / 1.0
LIFT (ft / m)	12 / 3.7	12 / 3.7	12 / 3.7	12 / 3.7	12 / 3.7
HEAD (ft / m)	22 / 6.7 with check valve 30 / 9.1	22 / 6.7 with check valve 30 / 9.1	22 / 6.7 with check valve 30 / 9.1	22 / 6.7 with check valve 30 / 9.1	22 / 6.7 with check valve 30 / 9.1
HOSE SIZE: MIN	1/2 in / 127 mm	1/2 in / 127 mm	1/2 in / 127 mm	1/2 in / 127 mm	1/2 in / 127 mm
MAX	1-1/4 in / 318 mm	1 in / 254 mm	1-1/4 in / 318 mm	1-1/4 in / 318 mm	1-1/4 in / 318 mm

* Body, flanges and clamp ring
** at 90 strokes/minute

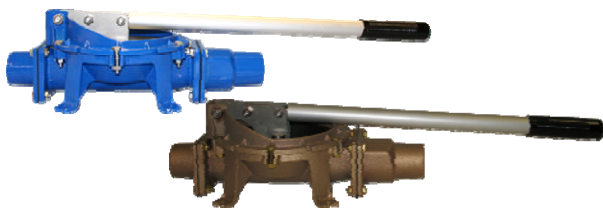
HAND PUMPS - STANDARD MOUNT



	GH-1400D	GH-0460D	GH-0500D	GH-0500N	GH-3500A
MATERIAL*	Delrin	Delrin	Delrin	Natural Delrin (Pigment-free)	Aluminum
CAPACITY** (gpm / lpm)	8.5 / 32.2	0.5 / 2.0	12 / 45.4	12 / 45.4	14 / 53.0
PRESSURE (psi / kg-cm ²)	15 / 1.0	40 / 2.8	15 / 1.0	15 / 1.0	15 / 1.0
LIFT (ft / m)	12 / 3.7	12 / 3.7	12 / 3.7	12 / 3.7	12 / 3.7
HEAD (ft / m)	22 / 6.7 with check valve 30 / 9.1	22 / 6.7 with check valve 75 / 22.8	22 / 6.7 with check valve 30 / 9.1	22 / 6.7 with check valve 30 / 9.1	22 / 6.7 with check valve 30 / 9.1
HOSE SIZE: MIN	1/2 in / 127 mm	3/8 in / 127 mm	1-1/4 in / 318 mm	1-1/4 in / 318 mm	1 in / 254 mm
MAX	1 in / 254 mm	1-1/4 in / 318 mm	2 in / 508 mm	2 in / 508 mm	1-1/2 in / 381 mm

* Body, flanges and clamp ring
** at 90 strokes/minute

HAND PUMPS - STANDARD MOUNT



	GH-2600A / B
MATERIAL*	Aluminum or Bronze
CAPACITY** (gpm / lpm)	20 / 75.7
PRESSURE (psi / kg-cm ²)	15 / 1.0
LIFT (ft / m)	12 / 3.7
HEAD (ft / m)	22 / 6.7 with check valve 30 / 9.1
HOSE SIZE: MIN	1-1/4 in / 318 mm
MAX	2 in / 508 mm

HAND PUMPS - FLUSH MOUNT



	GH-M400D	GH-M450D	GH-M500D
MATERIAL*	Delrin	Delrin	Delrin
CAPACITY** (gpm / lpm)	10 / 37.9	10 / 37.9	12 / 45.4
PRESSURE (psi / kg-cm ²)	15 / 1.0	15 / 1.0	15 / 1.0
LIFT (ft / m)	12 / 3.7	12 / 3.7	12 / 3.7
HEAD (ft / m)	22 / 6.7 with check valve 30 / 9.1	22 / 6.7 with check valve 30 / 9.1	22 / 6.7 with check valve 30 / 9.1
HOSE SIZE: MIN	1/2 in / 127 mm	1/2 in / 127 mm	1-1/4 in / 318 mm
MAX	1-1/4 in / 318 mm	1-1/4 in / 318 mm	2 in / 508 mm

* Body, flanges and clamp ring
** at 72 strokes/minute for 2600; 90 strokes/minute for "M" series

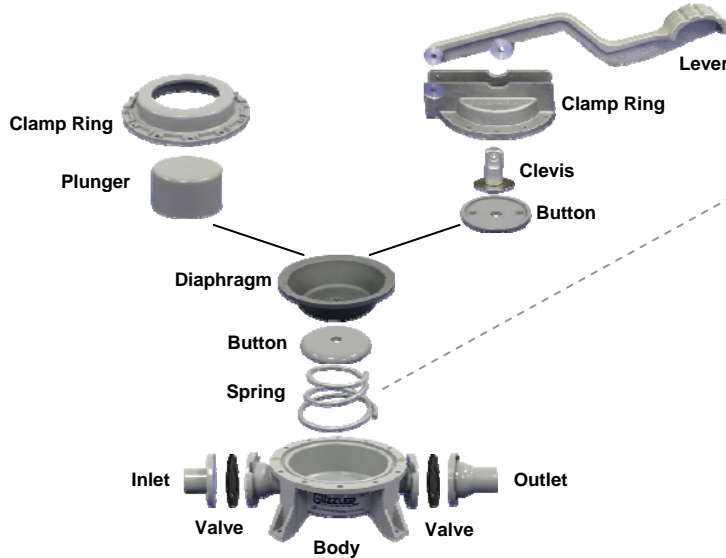
Guzzler Diaphragm Pump Families

For detailed specifications and customization options for each pump family, go to ...

www.thebosworthco.com

FOOT BUTTON PUMP

LEVER PUMP



Spring strength determines pump lift for foot button and lever pumps.

SPRING OPTION	SPRING STRENGTH (lbs/in deflection)	PUMP LIFT (ft / m)	VACUUM (in Hg)
LIGHTWEIGHT	20	3 / 0.9	2.6
STANDARD	35	6 / 1.8	5.3
HEAVY DUTY	55	10 / 3.1	8.8

For additional options, contact factory.

FOOT BUTTON PUMPS



	GF-0250S	GF-0400D	GF-0450D	GF-1400D	GF-0500D
MATERIAL*	ABS	Delrin	Delrin	Delrin	Delrin
CAPACITY (gpm / lpm)	1.3 / 4.9	2.7 / 10.2	2.7 / 10.2	2.7 / 10.2	2.7 / 10.2
PRESSURE (psi / kg-cm ²)	7.0 / 0.4	6.5 / 0.4	6.5 / 0.4	6.5 / 0.4	6.5 / 0.4
LIFT** (ft / m)	2.5 / 0.8	6 / 1.8	6 / 1.8	6 / 1.8	6 / 1.8
HEAD (ft / m)	12 / 3.6	15 / 4.6	15 / 4.6	15 / 4.6	15 / 4.6
HOSE SIZE: MIN	1/4 in / 64 mm	1/2 in / 127 mm	1/2 in / 127 mm	1/2 in / 127 mm	1-1/4 in / 318 mm
HOSE SIZE: MAX	1/2 in / 127 mm	1-1/4 in / 318 mm	1-1/4 in / 318 mm	1 in / 254 mm	2 in / 508 mm

LEVER PUMPS



	GL-0400D	GL-0450D	GL-0500D
MATERIAL*	Delrin + Aluminum	Delrin + Aluminum	Delrin + Aluminum
CAPACITY (gpm / lpm)	2.7 / 10.2	2.7 / 10.2	2.7 / 10.2
PRESSURE (psi / kg-cm ²)	15 / 1.0	15 / 1.0	15 / 1.0
LIFT** (ft / m)	6 / 1.8	6 / 1.8	6 / 1.8
HEAD (ft / m)	30 / 9.1	30 / 9.1	30 / 9.1
HOSE SIZE: MIN	1/2 in / 127 mm	1/2 in / 127 mm	1-1/4 in / 318 mm
HOSE SIZE: MAX	1-1/4 in / 318 mm	1-1/4 in / 318 mm	2 in / 508 mm

* Body, flanges and clamp ring

** with standard weight spring; larger lifts possible with stronger springs

Guzzler Diaphragm Pump Families

For detailed specifications and customization options for each pump family, go to ... www.thebosworthco.com

MOTORIZED PUMPS

	GE-0401D	GE-0401N	GE-0501D	GE-0501N
				
				
MATERIAL ¹	Delrin	Natural Delrin (Pigment free)	Delrin	Natural Delrin (Pigment free)
HOSE SIZE (min)	1/2 in / 127 mm	1/2 in / 127 mm	1-1/4 in / 318 mm	1-1/4 in / 318 mm
(max)	1-1/4 in / 318 mm	1-1/4 in / 318 mm	2 in / 508 mm	2 in / 508 mm
Motor	115 VAC, Parallel-shaft, reduced noise gearmotor			

Motor / Pump Performance and Option Table for GE-0401D, GE-0401N, GE-0451D, GE-0501D and GE-0501N pumps									
Pump Flow Rate ² (gpm / lpm)		Motor Speed ² (Nameplate RPM)	Full Load Torque (in-lbs)	Max Lift ³ (ft / m) Max Head (ft / m)	Max Pressure (psi / bar)	Input HP	Full Load Amps	Motor Enclosure ⁴	Motor Option Code
GE-0401D GE-0401N GE-0451D	GE-0501D GE-0501N								
2.2 / 8.3	2.8 / 10.6	20	44	7 / 2.1 7 / 2.1	3 / 0.21	1/50	0.3	P2	AA
			70	12 / 3.6 12 / 3.6	5 / 0.34	1/30	0.5	P3	BA
			177	20 / 6.1 25 / 7.6	12 / 0.83	1/12	1.1	P2, P3	AB, BB
3.3 / 12.5	4.1 / 15.5	30	59	9 / 2.7 9 / 2.7	4 / 0.28	1/30	0.5	P2, P3	AC, BC
			177	20 / 6.1 25 / 7.6	12 / 0.83	1/8	1.4	P2, P3	AD, BD
6.6 / 25.0	8.3 / 31.4	60	50	7 / 2.1 7 / 2.1	3 / 0.21	1/19	0.7	P2, P3	AJ, BJ
			102	16 / 4.8 16 / 4.8	7 / 0.48	1/8	1.4	P2	AK
			133	20 / 6.1 21 / 6.4	9 / 0.62	1/8	1.6	P3	BK
11.0 / 41.6	13.8 / 52.2	100	46	7 / 2.1 7 / 2.1	3 / 0.21	1/12	1.1	P2, P3	AS, BS
			68	12 / 3.6 12 / 3.6	5 / 0.34	1/8	1.4	P2	AT
			80	14 / 4.2 14 / 4.2	6 / 0.41	1/8	1.6	P3	BT

¹ Body and flanges

² At 0 lift / 0 head

³ For lifts above 12 feet, a check valve is required.

⁴ Motor Enclosures: P0: Open, vented
P1: Open, dripproof
P2: Fan-cooled, no protection against ingress of water
P3: Fan-cooled; protection against dust and from water spray in all directions
P4: Totally enclosed, non-ventilated

Guzzler Diaphragm Pump Families

For detailed specifications and customization options for each pump family, go to ...

www.thebosworthco.com

The Bosworth Company Products

MOTORIZED PUMPS

	GE-0403D	GE-0403N	GE-0503D	GE-0503N
12 VDC Motors				
	GE-0453D			
24 VDC Motors				
	GE-0454D			
MATERIAL¹	Delrin	Natural Delrin (Pigment free)	Delrin	Natural Delrin (Pigment free)
HOSE SIZE (min)	1/2 in / 127 mm	1/2 in / 127 mm	1-1/4 in / 318 mm	1-1/4 in / 318 mm
	(max) 1-1/4 in / 318 mm	1-1/4 in / 318 mm	2 in / 508 mm	2 in / 508 mm

Motor / Pump Performance and Option Table for GE-0403D, GE-0403N, GE-0453D, GE-0503D and GE-0503N pumps

Pump Flow Rate ² (gpm / ℓpm)		Motor Speed ² (Nameplate RPM)	Full Load Torque (in-lbs)	Max Lift ³ (ft / m) Head (ft / m)	Max Pressure (psi / bar)	Input HP	Full Load Amps	Motor Enclosure ⁴	Motor Option Code
GE-0403D GE-0403N GE-0453D	GE-0503D GE-0503N								
2.5 / 9.5	3.2 / 12.1	23	280	20 / 6.1 25 / 7.6	15 / 1.0	1/6	9.4	P4	PC
3.4 / 12.9	4.3 / 16.3	31	278		15 / 1.0	1/6	14.0	P4	PE
5.5 / 20.8	6.9 / 26.1	50	183		13 / 0.9	1/6	14.0	P4	PG
7.0 / 26.5	8.8 / 33.3	64	150	20 / 6.1 23 / 7.0	10 / 0.7	1/6	14.0	P4	PL
10.3 / 39.0	12.9 / 48.8	94	102	16 / 4.8 16 / 4.8	7 / 0.5	1/6	14.0	P4	PS

Motor / Pump Performance and Option Table for GE-0404D, GE-0404N, GE-0454D, GE-0504D and GE-0504N pumps

Pump Flow Rate ² (gpm / ℓpm)		Motor Speed ² (Nameplate RPM)	Full Load Torque (in-lbs)	Max Lift ³ (ft / m) Head (ft / m)	Max Pressure (psi / bar)	Input HP	Full Load Amps	Motor Enclosure ⁴	Motor Option Code
GE-0404D GE-0404N GE-0454D	GE-0504D, GE-0504N								
2.2 / 8.3	2.8 / 10.6	20	254	20 / 6.1 25 / 7.6	15 / 1.0	1/8	4.5	P4	TA
3.3 / 12.5	4.1 / 15.5	30	254	20 / 6.1 25 / 7.6	15 / 1.0	1/8	5.3	P4	TC
7.0 / 26.5	8.8 / 33.3	64	113	18 / 5.5 18 / 5.5	8 / 0.5	1/8	5.3	P4	TL

¹ Body and flanges

² At 0 lift / 0 head

³ For lifts above 12 ft, a check valve is required.

⁴ Motor Enclosures: P0: Open, vented

P1: Open, dripproof

P2: Fan-cooled, no protection against ingress of water

P3: Fan-cooled; protection against dust and from water spray in all directions

P4: Totally enclosed, non-ventilated

Guzzler Diaphragm Pump Families

For detailed specifications and customization options for each pump family, go to ... www.thebosworthco.com

ELECTRIC PUMPS



**GE-2600A
(Aluminum)**



**GE-2600B
(Bronze)**



	GE-2600A / B	GE-2601A / B	GE-2602A / B	GE-2603A / B	GE-2604A / B					
MOTOR VOLTAGE	Gear Reducer & Nema 56C motor-ready flange	115 VAC / 60 Hz	220 VAC / 50 Hz	12 VDC	24 VDC					
MATERIAL¹	Aluminum (A) / Bronze (B)									
HOSE SIZE (min)	1-1/4 in / 318 mm									
HOSE SIZE (max)	2 in / 508 mm									
Motor / Pump Performance and Option Table										
Pump Flow Rate ² (gpm / ℓpm)	Pump Speed ² (cpm)	Output Torque (in-lbs)	Gear Ratio	Max Lift ³ (ft / m) Head (ft / m)	Max Pressure (psi / bar)	Input HP	Full Load Amps	Motor Enclosure ⁴	Motor / Gear Reducer Code	
GE-2600A / B - Gear Reducer only & Nema 56C motor-ready flange⁵										
4.2 / 15.9	21	311	80:1	20 / 6.1 23 / 7.0	10 / 0.69	0.21	N/A	N/A	ØL	
5.8 / 21.9	29	391	60:1	20 / 6.1 25 / 7.6	12 / 0.83	0.31			ØK	
7.0 / 26.5	35	415	50:1		13 / 0.90	0.37			ØJ	
8.8 / 33.3	44	431	40:1		13 / 0.90	0.44			ØH	
11.6 / 43.9	58	442	30:1		14 / 0.97	0.56			ØG	
14.0 / 53.0	70	431	25:1		13 / 0.90	0.62			ØF	
17.6 / 66.6	88	432	20:1		13 / 0.90	0.75			ØE	
GE-2601A / B - 115 VAC, Capacitor-Start Motor										
4.4 / 16.6	22	311	80:1	20 / 6.1 23 / 7.0	10 / 0.69	1/4	5.0 / 2.3-2.5	P1	FC	
7.0 / 26.5	35	374	50:1	20 / 6.1 25 / 7.6	12 / 0.83	1/3	6.0 / 3.2-3.0	P1	FE	
8.6 / 32.5	43	431	40:1		13 / 0.90	1/2	8.6 / 4.3-4.3	P1	FG	
11.6 / 43.9	58	395	30:1		12 / 0.83	1/2	8.6 / 4.3-4.3	P1	FJ	
13.8 / 52.2	69	348	25:1		11 / 0.76	1/2	8.6 / 4.3-4.3	P1	FL	
17.2 / 65.1	86	258	20:1		20 / 6.1 21 / 6.4	9 / 0.62	1/2	8.6 / 4.3-4.3	P1	FQ
GE-2602A / B - 220 VAC / 50 Hz, Capacitor-Start Motor										
5.8 / 21.9	29	370	50:1	20 / 6.1 25 / 7.6	12 / 0.83	1/3	2.0 / 1.9	P5	KC	
7.2 / 27.2	36	344	40:1		13 / 0.90	1/2	2.9 / 2.8	P5	KE	
9.6 / 36.3	48	395	30:1		12 / 0.83	1/2	2.9 / 2.8	P5	KG	
11.4 / 43.1	57	481	25:1		11 / 0.76	1/2	2.9 / 2.8	P5	KJ	
14.2 / 53.7	71	432	20:1		20 / 6.1 21 / 6.4	9 / 0.62	1/2	2.9 / 2.8	P5	KN
19.0 / 71.9	95	427	15:1		16 / 4.8 16 / 4.8	7 / 0.48	1/2	2.9 / 2.8	P5	KS
GE-2603A / B - 12 VDC, Permanent Magnet Motor										
4.6 / 17.4	23	311	80:1	20 / 6.1 23 / 7.0	10 / 0.69	1/4	21.0	P4	MC	
7.2 / 27.2	36	374	50:1	20 / 6.1 25 / 7.6	12 / 0.83	1/3	27.0	P4	ME	
9.0 / 34.1	45	431	40:1		13 / 0.90	1/2	39.0	P4	MG	
12.0 / 45.4	60	395	30:1		12 / 0.83	1/2	39.0	P4	MJ	
14.4 / 54.5	72	348	25:1		11 / 0.76	1/2	39.0	P4	MN	
18.0 / 68.1	90	288	20:1		20 / 6.1 21 / 6.4	9 / 0.62	1/2	39.0	P4	MQ
GE-2604A / B - 24 VDC, Permanent Magnet Motor										
6.0 / 22.7	30	391	60:1	20 / 6.1 25 / 7.6	12 / 0.83	1/3	27.0	P4	RC	
9.0 / 34.1	45	431	40:1		13 / 0.90	1/2	39.0	P4	RG	
12.0 / 45.5	60	395	30:1		12 / 0.83	1/2	39.0	P4	RJ	
14.4 / 54.5	72	348	25:1		11 / 0.76	1/2	39.0	P4	RN	
18.0 / 68.1	90	288	20:1		20 / 6.1 21 / 6.4	9 / 0.62	1/2	39.0	P4	RQ

¹ Body and flanges

² At 0 lift / 0 head

³ For lifts above 12 feet, a check valve is required.

⁴ Motor Enclosures:

P0: Open, vented

P1: Open, dripproof

P2: Fan-cooled, no protection against ingress of water

P3: Fan-cooled, protection against dust and from water spray in all directions

P4: Totally enclosed, non-ventilated

P5: Totally enclosed, fan-cooled

⁵ For motor-ready GE-2600A/B pump, flow rate, pump speeds, lift/head and pressure data assume motor operating at 1750 RPM.

Customizing Your Guzzler

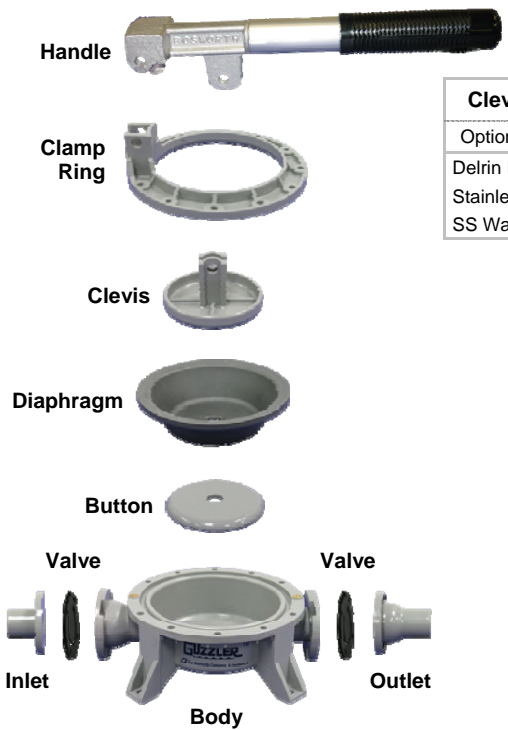
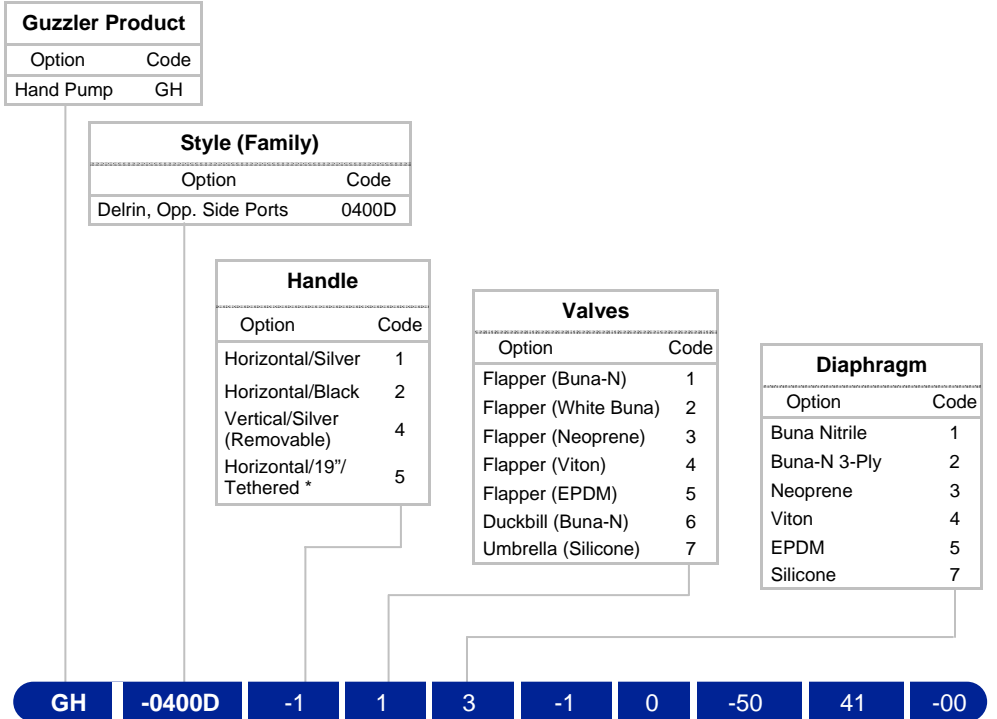
Guzzler pumps offer a wide range of component options. They can be extensively customized to meet individual application needs. For detailed specifications and customization options, visit ...

www.thebosworthco.com



Example: GH-0400D-113-10-5041-00

- Guzzler Hand Pump
- Model style #0400D: Delrin Body, Opposite Side Ports
- Horizontal Handle (Silver)
- Buna-N Flapper Valves
- Neoprene Diaphragm
- Delrin Plastic Clevis/Button Assembly
- Delrin Plastic Clamp Ring
- Inlet: 1" Smooth
- Outlet: 3/4" NPT Tapped
- No Spring



Clevis/Button Assembly

Option	Code
Delrin Plastic	1
Stainless Steel	3
SS Washer & Alum Clevis	4

Clamp Ring

Option	Code
Delrin Plastic	0
Epoxy-coated Alum	1
Epoxy-coated Alum w/Stop Brackets	4
Epoxy-coated Alum w/Stroke Guide	5

Hose Connections

Option	Code	
	Inlet	Outlet
1/2" NPT Tapped	31	31
3/4" Smooth	40	40
3/4" NPT Tapped	41	41
3/4" NPT Threaded	42	42
3/4" Barbed	43	43
3/4" Female GH Adapter	45	45
3/4" Male Garden Hose	46	46
1" Smooth	50	50
1" NPT Threaded	52	52
1-1/8" Smooth	60	60
1-1/8" Barbed	63	63
1-1/4" Smooth	70	70

Internal Spring

Option	Code
No Spring	00
Std Weight SS	10
Lightweight SS	20
Heavy Duty SS	30

* Note: 19" Tethered Handle option requires Epoxy-coated Aluminum Clamp Ring with Stroke Guide

Sea-Lect Y-Valves (Diverter Valves)

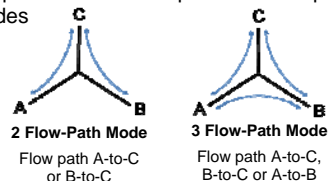


REDESIGNED INTERNALS !

- Improved turnability for ease of operating
- Resists freeze-up

FEATURES / BENEFITS

- Rugged aluminum handle for durability
- Inline, base-support or flush-mounted options
- Available with wide variety of end sizes and styles for ease of installation
- Ideal for marine plumbing applications
- Supports either 2 flow-path or 3 flow-path modes



Activation Options

Rugged Epoxy-coated Aluminum Handle with locking tab. Arrows indicate flow path.



"Slot activated" Y-valve can be opened/closed with ordinary screw-driver.



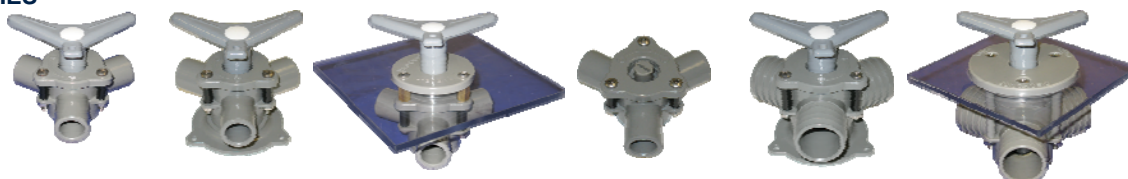
Port Options

Port ends available in variety of sizes and styles, including barbed, threaded and tapped to accommodate a wide range of adapters.

Face Plate/Trim Ring Options (for Flush Mount Y-Valves)



Y-VALVE FAMILIES



	YV-094D-L	YV-094D-B	YV-094D-F	YV-194D-F	YV-095D-B	YV-095D-F
MATERIAL*	Delrin / Natural Rubber	Delrin / Natural Rubber	Delrin / Natural Rubber	Delrin / Natural Rubber	Delrin / Natural Rubber	Delrin / Natural Rubber
PRESSURE (psi / kg-cm ⁻²)	40 / 2.8	40 / 2.8	40 / 2.8	40 / 2.8	40 / 2.8	40 / 2.8
MOUNTING	Inline	Base mount	Flush mount	Flush mount, Slot-activated	Base mount	Flush mount
HOSE SIZE: MIN MAX	1/2 in / 127 mm 1 in / 254 mm	1/2 in / 127 mm 1 in / 254 mm	1/2 in / 127 mm 1 in / 254 mm	1/2 in / 127 mm 1 in / 254 mm	1 in / 254 mm 1-1/2 in / 381 mm	1 in / 254 mm 1-1/2 in / 381 mm

*Body / valve seat (in contact with fluid)

CUSTOMIZING YOUR Y-VALVE

Example: YV-094D-B-30-474848



- Y-Valve Model style 94 (Delrin/Gray),
- Base mounting
- Epoxy-coated Aluminum V-Shaped Handle
- No Trim Ring
- 3/4" Barbed Adapter
- 3/4" 90° Barbed Adapter
- 3/4" 90° Barbed Adapter

YV-094D-B -3 0 -47 48 48

Activation	Code
Straight Handle (Delrin)	-2
V-Handle (Aluminum)	-3

Trim Ring (Face Plate)	Code
None	0

Hose Connections	Code		
	Port 1	Port 2	Port 3
1/2" NPT Tapped	-31	31	31
1/2" Barbed Adapter	-37	37	37
1/2" 90° Barbed Adapter	-38	38	38
5/8" Barbed Adapter	-27	27	27
5/8" 90° Barbed Adapter	-28	28	28
3/4" NPT Threaded	-42	42	42
3/4" Barbed Adapter	-47	47	47
3/4" 90° Barbed Adapter	-48	48	48
1" Smooth	-50	50	50

For detailed specifications and customization options for each Y-Valve family, go to ...

www.thebosworthco.com

Check Valves (Foot Valves)

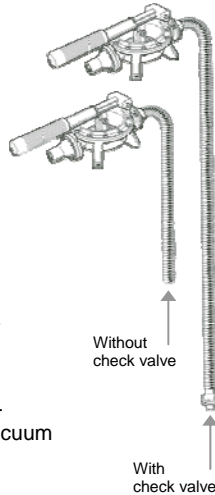


For detailed check valve specifications and customization options, go to ...

www.thebosworthco.com

CUSTOMIZING YOUR CHECK VALVE

- Helps create and maintain pump prime
- Increases pump lift/delivery capability
- Prevents backflow
- Available with range of inlet/outlet sizes and ends
- Available with different valve types
 - Standard flapper valves for most applications
 - Umbrella valve for positive shutoff when pumping clean liquid or air/vacuum service



Example: **CV-0400D-1-5041**

- Sea-Lect Check Valve
- Model style 0400D (Delrin/Gray)
- Buna-N Flapper Valve
- Inlet: 1" Smooth
- Outlet: 3/4" NPT Tapped

CV-0400D **-1** **-50** **41**

Valve	Code
Flapper (Buna-N)	-1
Flapper (White Buna)	-2
Flapper (Neoprene)	-3
Flapper (Viton)	-4
Flapper (EPDM)	-5
Duckbill (Buna-N)	-6
Umbrella (Silicone)	-7

Hose Connections	Code	
	Inlet	Outlet
1/2" NPT Tapped	-31	31
1/2" Barbed Adapter	-37	37
5/8" Barbed Adapter	-27	27
3/4" Smooth	-40	40
3/4" NPT Tapped	-41	41
3/4" NPT Threaded	-42	42
3/4" Barbed	-43	43
3/4" Male Garden Hose	-46	46
3/4" Barbed Adapter	-47	47
1" Smooth	-50	50
1" NPT Threaded	-52	52
1-1/8" Smooth	-60	60
1-1/8" Barbed	-63	63
1-1/4" Smooth	-70	70

CHECK VALVE FAMILIES



	CV-0400D	CV-0400N	CV-0410D	CV-0500D	CV-2600A / B
PRODUCT	Check Valve	Check Valve	Strainer/Check Valve	Check Valve	Check Valve
MATERIAL*	Delrin	Natural Delrin (Pigment-free)	Delrin	Delrin	Aluminum or Bronze
MAX LIFT/HEAD PRESSURE (psi / kg-cm ²)	20 / 1.4	20 / 1.4	20 / 1.4	20 / 1.4	20 / 1.4
VALVE TYPE CRACKING PRESSURE (psi / kg-cm ²)	Flapper 0.0 / 0.0 Duckbill 0.0 / 0.0 Umbrella 0.036 / 0.0025	Flapper (White Buna) 0.0 / 0.0	Flapper 0.0 / 0.0	Flapper 0.0 / 0.0 Duckbill 0.0 / 0.0	Flapper 0.027 / 0.0019
HOSE SIZE: MIN MAX	1/2 in / 127 mm 1-1/4 in / 318 mm	1/2 in / 127 mm 1 in / 254 mm	1/2 in / 127 mm 1-1/4 in / 318 mm	1-1/4 in / 318 mm 2 in / 508 mm	1-1/4 in / 318 mm 2 in / 508 mm

*Body

Accessories

CAM AND GROOVE FITTINGS

These inexpensive fittings make quick, tight connections.



(in x in)	C&G - Type A	C&G - Type B	C&G - Type C
	Female NPT x Male Adapter	Male NPT x Male Adapter	Female Coupler x Hose Barb
1/2 X 1/2	F4 - A6	M4 - A6	
3/4 X 1/2			C6 - H4
3/4 X 3/4	F6 - A6	M6 - A6	C6 - H6
1 X 1	F8 - A8	M8 - A8	C8 - H8
1-1/4 X 1-1/2	F10 - A12		C10 - H12
1-1/2 X 1-1/2	F12 - A12	M12 - A12	C12 - H12
2 X 2	F16 - A16	M16 - A16	C16 - H16

ADAPTERS - BARBED FITTINGS



NPT X Hose Size (in x in)	Straight Barbed Adapter	90° Elbow Barbed Adapter
	Part #	Part #
1/2 X 3/8	N - 4 - 3	L - 4 - 3
1/2 X 1/2	N - 4 - 4	L - 4 - 4
1/2 X 5/8	N - 4 - 5	L - 4 - 5
1/2 X 3/4	N - 4 - 6	L - 4 - 6
3/4 X 3/8	N - 6 - 3	L - 6 - 3
3/4 X 1/2	N - 6 - 4	L - 6 - 4
3/4 X 5/8	N - 6 - 5	L - 6 - 5
3/4 X 3/4	N - 6 - 6	L - 6 - 6
3/4 X 1	N - 6 - 8	L - 6 - 8

Accessories

SERVICE KITS

Service kits consisting of a replacement diaphragm and pair of valves are available for all Guzzler pumps. Options available for diaphragm material as well as valve type and valve material depend on pump model.



PUMP BODY STYLE	PUMP TYPE	DIAPHRAGM	VALVES	SERVICE KIT
0400D, 0400P, 0450D, M400D, M450D, 3400A	Hand (GH-), Foot, (GF-) Lever (GL-), Electric (GE-)	Buna-N, Buna-N 3-Ply, Neoprene, Viton, EPDM, Silicone	Flapper: Buna-N, White Buna-N, Neoprene, Viton, EPDM Duckbill: Buna-N Umbrella: Silicone	G400-SK G400-SK-DB G400-SK-UV
0500D, M500D, 3500A	Hand (GH-)	Buna-N	Flapper: Buna-N Duckbill: Buna-N	G500-SK G500-SK-DB
1400D	Hand (GH-), Foot (GF-)	Buna-N, Buna-N 3-Ply, Neoprene, Viton, EPDM, Silicone	Umbrella: Silicone	G400-SK-UV
0400N	Hand (GH-)	Silicone	Flapper: White Buna-N	G2400-SK
2600A, 2600B	Hand (GH-), Electric (GE-)	Buna-N Double-Sided	Flapper: Buna-N w/embedded SS plate	G2600-SK
0250S	Foot (GF-)	Natural Rubber	Umbrella: EPDM	G250-SK

HOSE-RELATED ACCESSORIES

STRAINERS			HOSE		HOSE END CUFFS		BAND CLAMPS	
	Strainers attach to the intake hose to strain debris	PART #	Non-collapsing, wire-reinforced vinyl hose	PART #	Recommended for neat, leak-proof connection.	PART #	Adjustable clamp easily secures hose to fittings	PART #
1 in (2.5cm)		84		44		54		64
1-1/2 in (3.8 cm)		85		45		55		65
2 in (5.1 cm)		86		46		56		66

VENTED LOOP



SIZE	PART #
1-1/8 in (2.9 cm)	S-VL-30-18
1-1/2 in (3.8 cm)	S-VL-30-24

Install in discharge line of sewage treatment systems to prevent back-siphoning in marine sanitation devices.

THRU-DECK MOUNTING KIT



PUMP COMPATIBILITY	PART #
GH-0400D, GH-0450D, GH-0500D	G-TDMK-400/500
GH-2600A/B	G-TDMK-2600

Convenient kit for installing non-flush mounted Guzzler 400 and 500 series pumps below the deck or behind a wall. Consists of deck plate and cover, boot and aluminum standoffs.

For detailed specifications and customization options for all accessories, go to ...

www.thebosworthco.com

In the marine industry, Bosworth pumps are used on sailboats as bilge pumps and on-board holding tank pumps. For larger boats as well as onshore, Bosworth's **GE-2600A** line of 2" motorized pumps are used for bilge as well as holding tank pumpout.



The Bosworth Company Applications

Bosworth Y-valves are used in marine plumbing applications to divert water from holding tanks to overboard lines, as well as to divert water to either livewell tanks or for deck washdown. Bosworth check valves are widely used to increase pump lift, maintain pump prime or prevent bilge backflow.



Applications - Marine



The kayak industry uses the lightweight Guzzler foot pumps as onboard bilge pumps. Typically mounted on the bulkhead, these foot-operated pumps allow the kayak operator to pump out incoming water while keeping both hands on the paddle.



Guzzler GF-0400D foot pump mounted to kayak bulkhead bracket. *(Image courtesy of Hybrid Pty Ltd.)*



Kayak installation of Guzzler GF-450D foot pump with same-side ports



Applications - Portable Sanitation



Bosworth foot and hand pumps are used extensively in portable sanitation systems in portable toilets equipped with flushing units.



Bosworth's recently introduced Guzzler Jr. (GF-0250S) foot pump is designed to meet the needs of portable handwash stations.

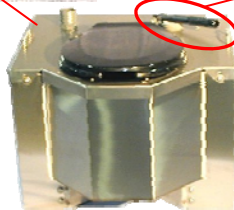
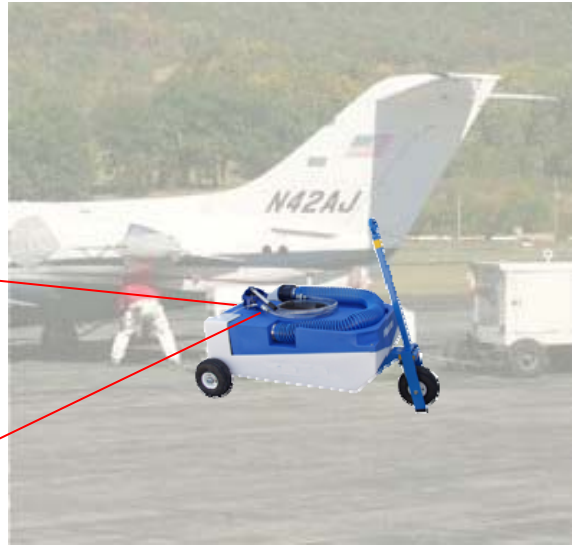


The Bosworth Company Applications

Applications - Mobile Sanitation

Bosworth pumps are used in train restrooms and in lavatory carts that service airplane lavatory facilities.

The Bosworth Company Applications

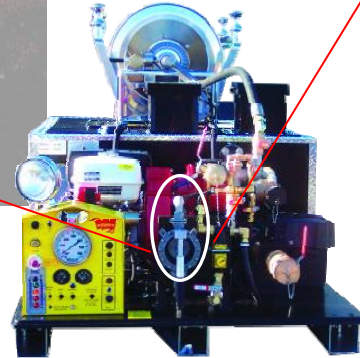


Bosworth handle-operated pump on toilet designed for use on train locomotives

Applications - Priming Pumps



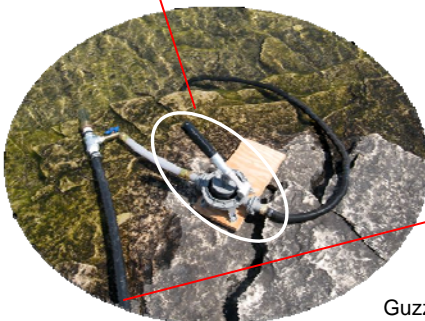
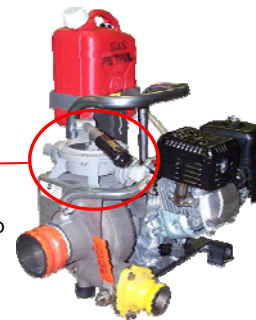
Guzzler priming fire-safety pumps in truck slip-on unit



Guzzler pumps' proven reliability makes them an ideal pump for critical applications such as fire suppressant foam-mixing and for priming larger pumps used in fire safety equipment. Guzzlers are used to prime dewatering pumps for draining ditches and trenches at construction sites. Additionally, Guzzler pumps are widely used as priming pumps for vacation cottage water systems.



Guzzler priming gasoline-powered dewatering pump



Guzzler priming jet pump for cottage water system



Applications - Water Filtration/Purification



Photo courtesy of New Life International

Guzzler pumps are at work in water purification systems. In one such system, the Guzzler is used to circulate water through a chlorination process, helping to bring safe drinking water to remote regions. Guzzler hand pumps are ideal for applications such as these in areas where power is either not available or unreliable.

Guzzler pumps are also used as priming pumps for mobile water purification systems such as the US Army Lightweight Water Purification (LWP) unit shown below.

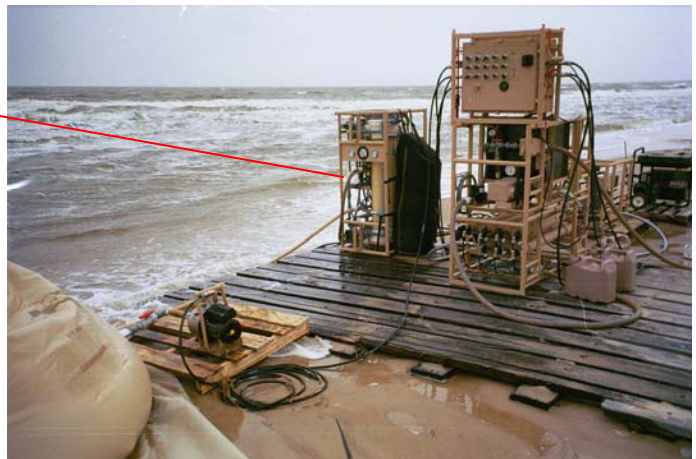


Photo courtesy of MECO, Inc.



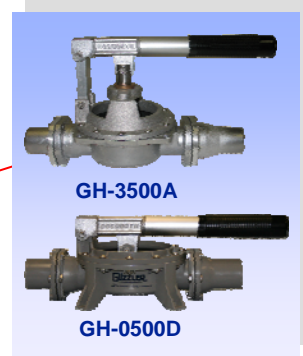
The Bosworth Company Applications



Photo courtesy of Puredak Water Solutions



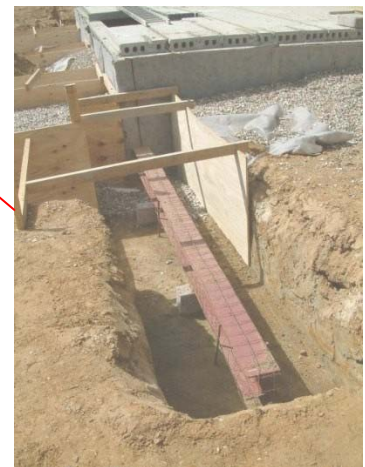
Photo courtesy of Aquamira Technologies, Inc.



Manufacturers have integrated Guzzler pumps into equipment used in the construction industry, including a variety of low pressure grout pumps used for grouting metal door and window frames, filling hollow concrete block, general void filling, etc.



Guzzler pumps are often on hand at construction sites for on-the-job dewatering tasks. Guzzler diaphragm pumps are suitable for pumping muddy water with suspended solids as may be found in construction trenches, manholes and pits.



Applications - Emergency Preparedness



“ ... accompanied by heavy rains and strong winds. Power outages and local flooding can be expected ...”



Guzzler pump operates backup sewage system in emergency shelter.



Guzzler hand and foot operated pumps provide a much-needed backup capability when the power goes out. They are a component of backup sanitation systems in emergency shelters and can also be used for manually operated emergency backup water filtration systems.

Guzzler pumps are also used as backup emergency sump pumps to drain flooded basements in the event of sump pump or power failure. When connected to 2" hose, the **GH-2600A** pump can eject 25 gallons per minute.





OEM sap vacuum system uses twin Guzzler GE-2600A pumps

Bosworth pumps are used in diverse applications in the food processing industry. In maple syrup production, the **GE-0401D/N**, **GE-0501D/N** and **GE2600A** motorized pumps are used to establish vacuum on the tap lines.

The Bosworth **0400N** and **0500N** families of pumps, made of FDA-compliant materials, are used in production systems that transfer maple syrup. These Bosworth pumps are suitable for use in transferring food liquids, sauces and pastes with viscosities up to the consistence of that of mustard or ketchup.



GH-0401N

GH-0501N



In the agricultural industry, Bosworth pumps are used as part of systems and products for cow drenching, as well as priming pumps for water delivery in agricultural applications.



GH-4000D



GE-2600A

GE-0401D

GE-0401N

GE-0501N

Applications - Chemical Transfer

Go to <http://www.thebosworthco.com/chemapp.php> on the Bosworth website for an online tool to help you select the right Guzzler for your chemical transfer application.

Because Guzzler pumps are available with a broad range of options for their component materials, they can be used for a variety of special chemical transfer needs. Guzzler pump diaphragms and valves are available in Buna Nitrile, Neoprene, EPDM, Silicone and Viton. Guzzler pump bodies are available in Delrin, Natural Delrin, polypropylene, aluminum and bronze.



Guzzler pumps are used in OEM products and systems that provide rapid emptying of decontamination pools, holding and drainage tanks, wells, etc. Large quantities of fluids can be pumped quickly without the need for electricity or the risk of sparks.



Hazardous materials decon shower and pool



Guzzler Polypropylene Pump



The **Guzzler 0400N** and **0500N** families of pumps are made of **FDA-approved materials**, making them suitable for a range of laboratory, pharmaceutical and biomedical uses.



Applications - Dewatering

Bosworth pumps have been incorporated into a number of easy-to-use products for dewatering, waste transfer and general draining applications used by contractors, boaters and homeowners.

Roofs



Yards



Pool Covers



The Bosworth Company Applications



www.thebosworthco.com


Home > Products > Overview > Hand Pumps
Part Number Lookup:

[Home](#) [Industries](#) [Products](#) [Product Instructions](#) [News & Info](#) [How to Buy](#) [About Bosworth](#) [Login](#) [Downloads](#)

Guzzler® GH-0400D

	FEATURE	OPTION
Edit	Handle Style	Horizontal/Silver
Edit	Valves	Flapper (Buna-N)
Edit	Diaphragm	Neoprene
Edit	Clevis/Button Assembly	Delrin Plastic
Edit	Clamp Ring	Delrin Plastic
Edit	Inlet Hose Connection	1" Smooth
Edit	Outlet Hose Connection	1" Smooth
Edit	Internal Spring	None
Edit	Pre-Pak Accessories	Not selected



[Additional Images](#)

Guzzler "400"

Reliable, rugged, lightweight hand pump ideal for bilge or fluid transfer applications in marine or sanitation applications as well as for home or industrial uses.

- Durable, lightweight Delrin® plastic
- Accommodates 1/2" - 1-1/4" hose
- 10 GPM
- Rugged aluminum handle
- Clamp ring adjusts to 12 different handle orientations
- Available with either horizontal or vertical handle
- Optional aluminum clamp ring for added durability

Performance

Max Pressure	15 psi / 1.03 bar
Lift	12.0 ft / 3.7 m 22.0 ft / 6.7 m with check valve
Head	30 ft / 9.1 m
Capacity (@ 90 strokes/min)	10.0 gpm / 37.9 lpm
Volume per stroke	0.44 qt / 0.42 l
Max Service Temp	150° F / 66° C

Model #:

Order #: Item ID:

MSRP

[Contact factory for pricing.](#)

Accessories


[Service Kit](#)


[Hose](#)


[Hose end cuff](#)

- View product features and options
- Select options to customize product for your application
- View product performance specs
- Access helpful information on product components
- Find replacement parts
- Download complete product specifications
- Access additional product options

Website: www.thebosworthco.com
Inquiries: info@thebosworthco.com